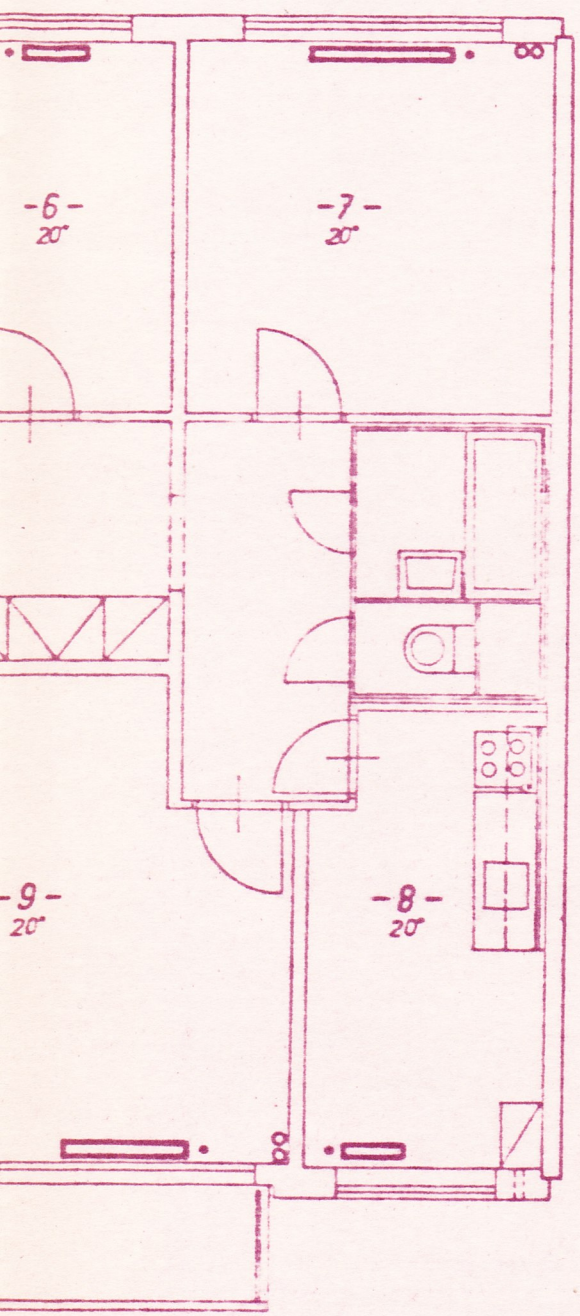


10/500/110
Ps 3/8

18/500/110
Ps 3/8

5

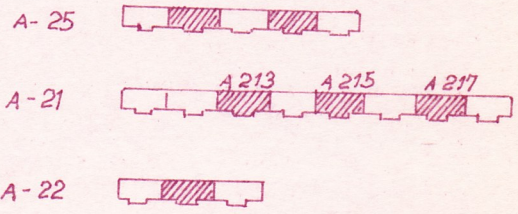


20/500/110
Ps 1/2

5

10/500/160
Ps 3/8

PROFat + EKIS
JHLAVA
spol. s r. o.
HLUBOKÁ 8, 586 01 JIHLAVA



REG. VENTILY HERZ

| VED. PROJ. | ZODP. PROJ. | VYPRACOVAL | KRESLIL | KONTROLA | | |
|---|-------------|---------------|---------|--------------------|------------|-----------|
| ING. JÁNSKÝ | BARTOŠ | <i>Bartoš</i> | | <i>[Signature]</i> | | |
| INVESTOR SBD MIR | | | | | FORMAT | |
| SIDLIŠTĚ LIŠEŇ - III. B. STAVBA BYTOVÝ DŮM A - 213, 215, 217 | | | | | STUPĚŇ | P |
| | | | | | DATUM | 12/1993 |
| | | | | | ZAK. ČÍSLO | 248-93-P |
| I. PODLAŽÍ | | | | | MĚŘITKO | ČÍS VYKR. |
| | | | | | 1:50 | 702 |

17 / 500 / 110
PS 3/8"

10 / 500 / 110
PS 3/8"

2

15 / 500 / 110
PS 3/8"

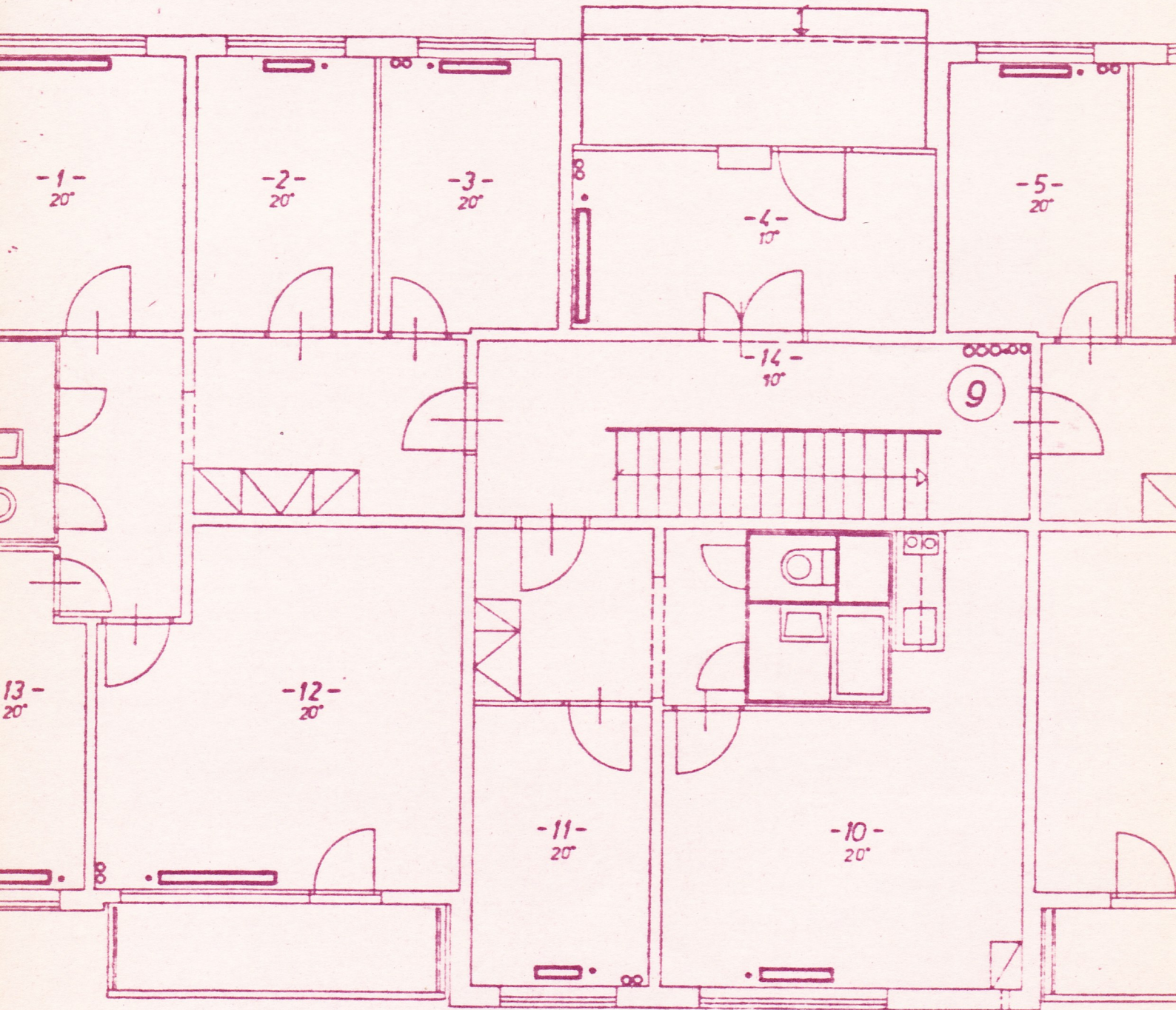
3

24 / 500 / 160
PS 1/2"

3 x 2000 x 76/3
PS 3/8"

15 / 500 / 110
PS 3/8"

4



10 / 3/8"

8

24 / 500 / 110
PS 1/2"

9 / 500 / 110
PS 3/8"

7

15 / 500 / 110
PS 1/2"

1



9/500/1
PS